



Our first step is to identify a trainee's potential: trainees must successfully complete our Application and Assessment process to demonstrate their suitability for Teacher Training.



The key word is 'potential' - we understand that everyone's journey to QTS is unique.



Grad2Teach complete all vetting and safeguarding checks.



Grad2Teach (G2T) trainees start working with students from day one - usually in a support role, but often in a team-teaching, or teaching capacity.

Training starts right away online with our fortnightly sessions and weekly portfolio requirements, before our half-term training schedule begins.



Grad2Teach training schedules are designed to fit around schools.

Many trainees can start teaching independently from day one!



Trainees can start practising and developing their teaching skills - often starting off by co-teaching.

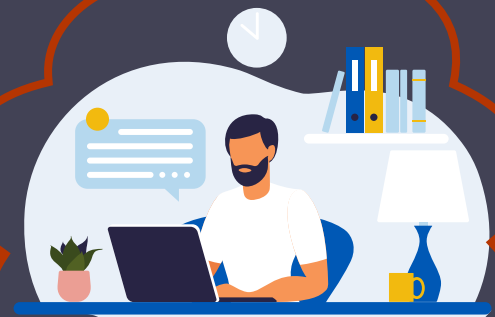
Once trainees have met certain 'Progress Review' targets, we'll assign an experienced G2T Teacher Trainer for professional support, guidance, feedback, and for observations.



When opportunities are available, trainees can begin developing their independent teaching practice with their own timetable, building towards teaching at least 12-hours per week. Grad2Teach Trainers will arrange to observe trainees up to once per term of Phase 1, and a member of our Teaching and Learning Team can come in to observe where requested.

Trainers observe trainees termly, whilst the G2T Teaching & Learning team can also come in for observations.

Trainees attend a two-day residential training session designed to prepare them for Phase 2 and further develop their teaching practice.



After three terms, it's time to make an application to start Phase 2: the PGCE.

Trainees attend the mandatory two-day induction at the university's campus, meeting the course team and your PGCE cohort.

Grad2Teach deliver an essay-writing support session



Trainees are now confident, independent teachers with their own timetables and weekly requirements for the year (for more on weekly requirements, contact the Grad2Teach team directly).

Trainees complete three assignments during the PGCE: one per term.

Grad2Teach can come in to observe, or join mentor meetings.



Training is delivered online and in-person (Primary trainees, and trainees of 'practical' subjects, like Science or PE, visit university twice more, other secondary trainees just once more). Trainees upload resources and complete online short-courses weekly

Grad2Teach are **always** available for support, and we run fortnightly 'check-in' sessions for all of our Phase 2 trainees.

Grad2Teach deliver an employment workshop



After returning to their main schools, trainees continue teaching, and developing their portfolio, before delivering their 'Viva' - the final requirement for the PGCE.

Trainees spend time at a second placement school.

That's it! Now it's time to celebrate and wait for your QTS Certificate.

**Qualified Teacher Status**

Grad2Teach stay in touch, and we're always here to help - good luck!

